



# GMT MONTHLY MEMBERSHIP PROGRESS REPORT

Results as of: 5/31/2020

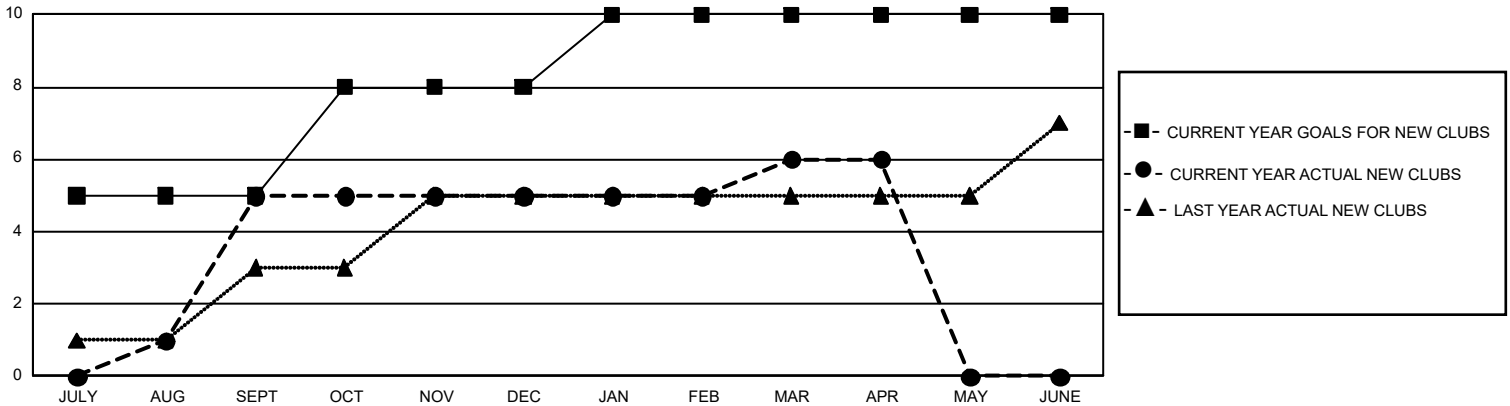
## GMT Constitutional Area 5 - E, Group P

GMT: OPEN

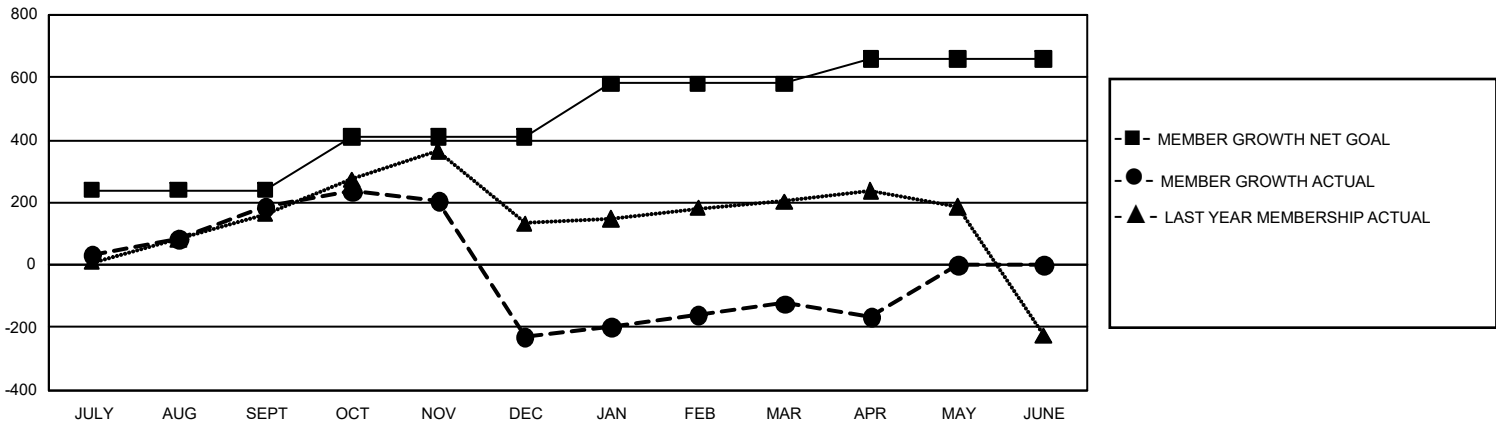
REPORT DOES NOT INCLUDE CLUBS IN UNDISTRICTED AREAS.

Clubs				Members			
RESULTS FOR 2019-2020				RESULTS FOR 2019-2020			
QUARTER	NEW CLUB GOAL	NEW CLUBS	DROPPED CLUBS	QUARTER	MEMBER GROWTH NET GOAL	MEMBER GROWTH ACTUAL	DROPPED MEMBERS ACTUAL (including transfers)
JULY/AUG/SEPT	15	5	0	JULY/AUG/SEPT	720	359	140
OCT/NOV/DEC	9	0	2	OCT/NOV/DEC	510	152	543
JAN/FEB/MAR	6	1	2	JAN/FEB/MAR	510	183	70
APR/MAY/JUNE	0	0	0	APR/MAY/JUNE	240	87	92

GOALS AND ACTUAL NEW CLUBS CUMULATIVE



GOALS AND ACTUAL MEMBERS CUMULATIVE



DROPPED CLUBS: 4	136 CLUBS OF 296 ADDED 1 OR MORE NEW MEMBERS	<u>GENDER DISTRIBUTION</u>	
		MALE	3,999 (51.87%)
		FEMALE	3,710 (48.13%)
<u>DROPPED MEMBERS</u>		TOTAL FAMILY UNIT MEMBERS	415
DECEASED	21	<a href="#">CLICK HERE FOR CUMULATIVE MEMBERSHIP DATA</a>	
CLUB CANCELLED	49		
OTHER	775		
<b>TOTAL</b>	<b>845</b>	FAMILY MEMBERS PAYING HALF DUES	223